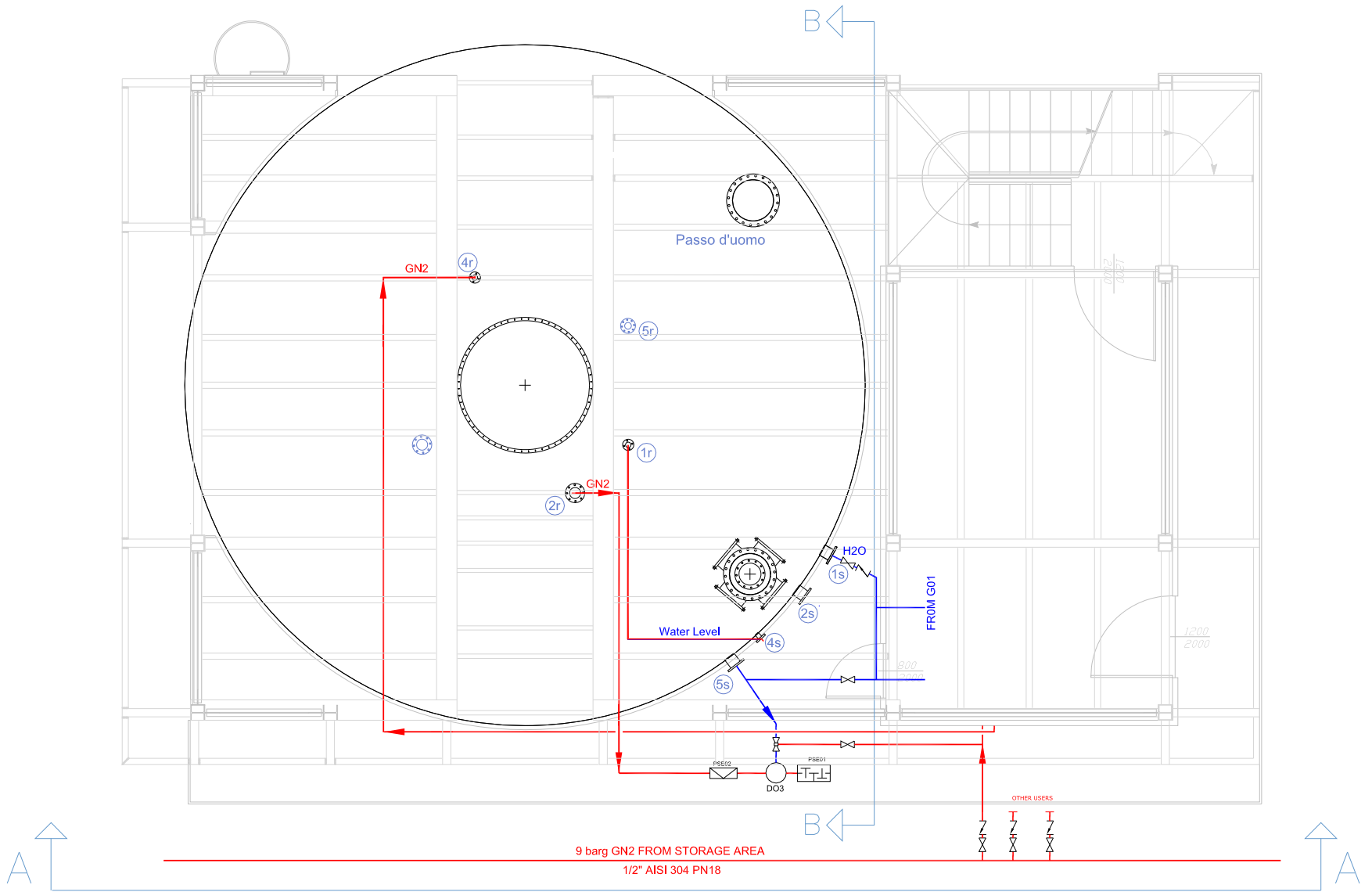


Water System Construction and Integration

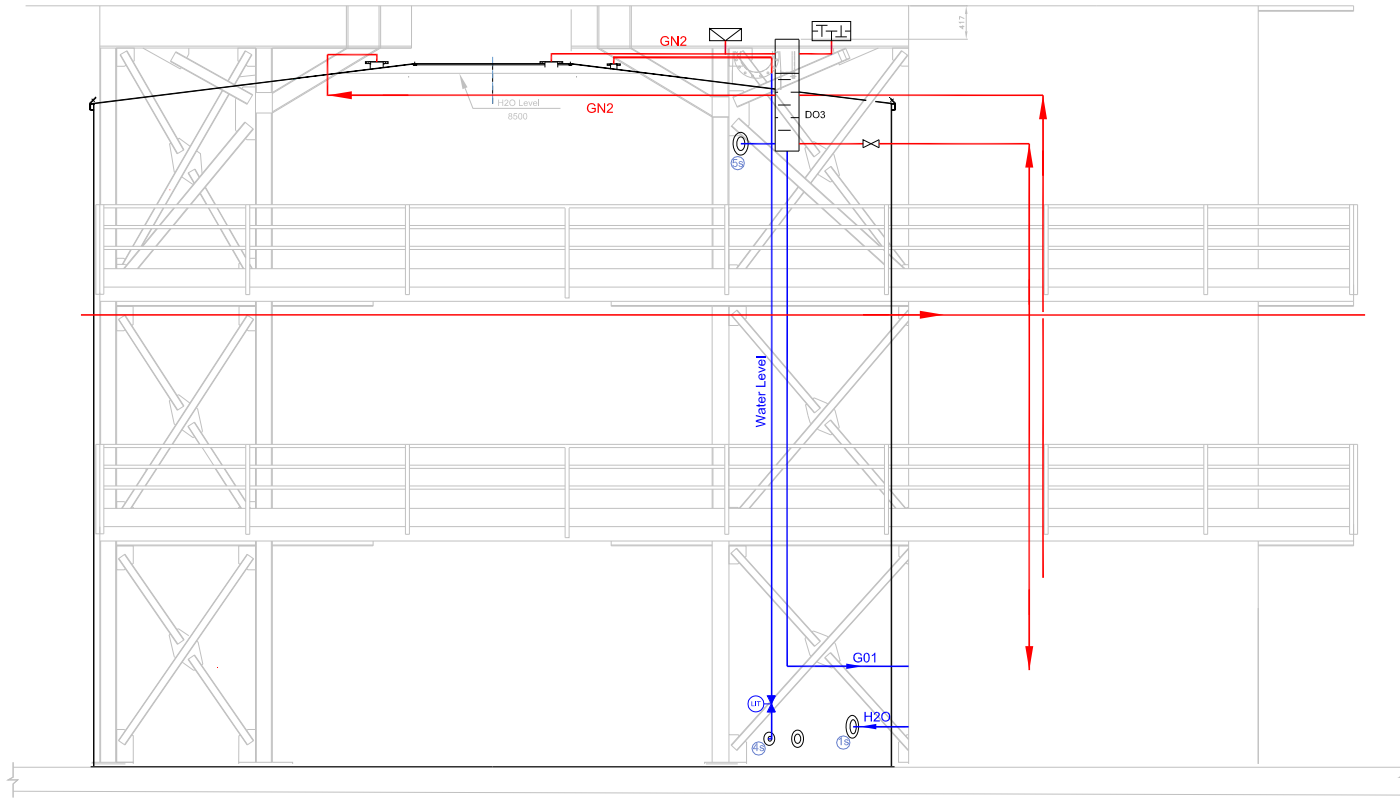
(Balata M. Castagna M. Ioannucci L.)

- Time schedule:
- Within 30 of june '08 the tender documents has to be sent to INFN GE
- Within 30 of September '08 the tender has to be assigned.
- Commissioning and construction completed in two months (end o november)



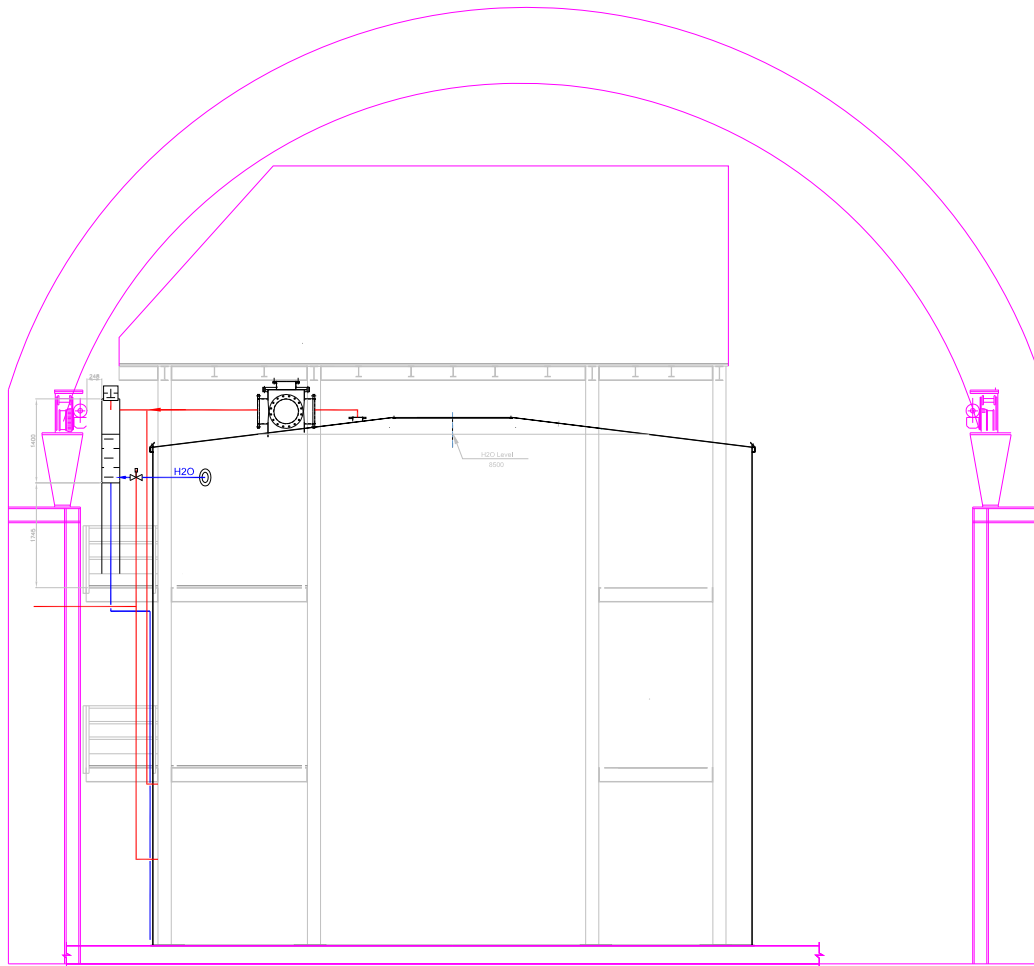
Gerda Meeting
LNGS 9-11 june 08

A-A view

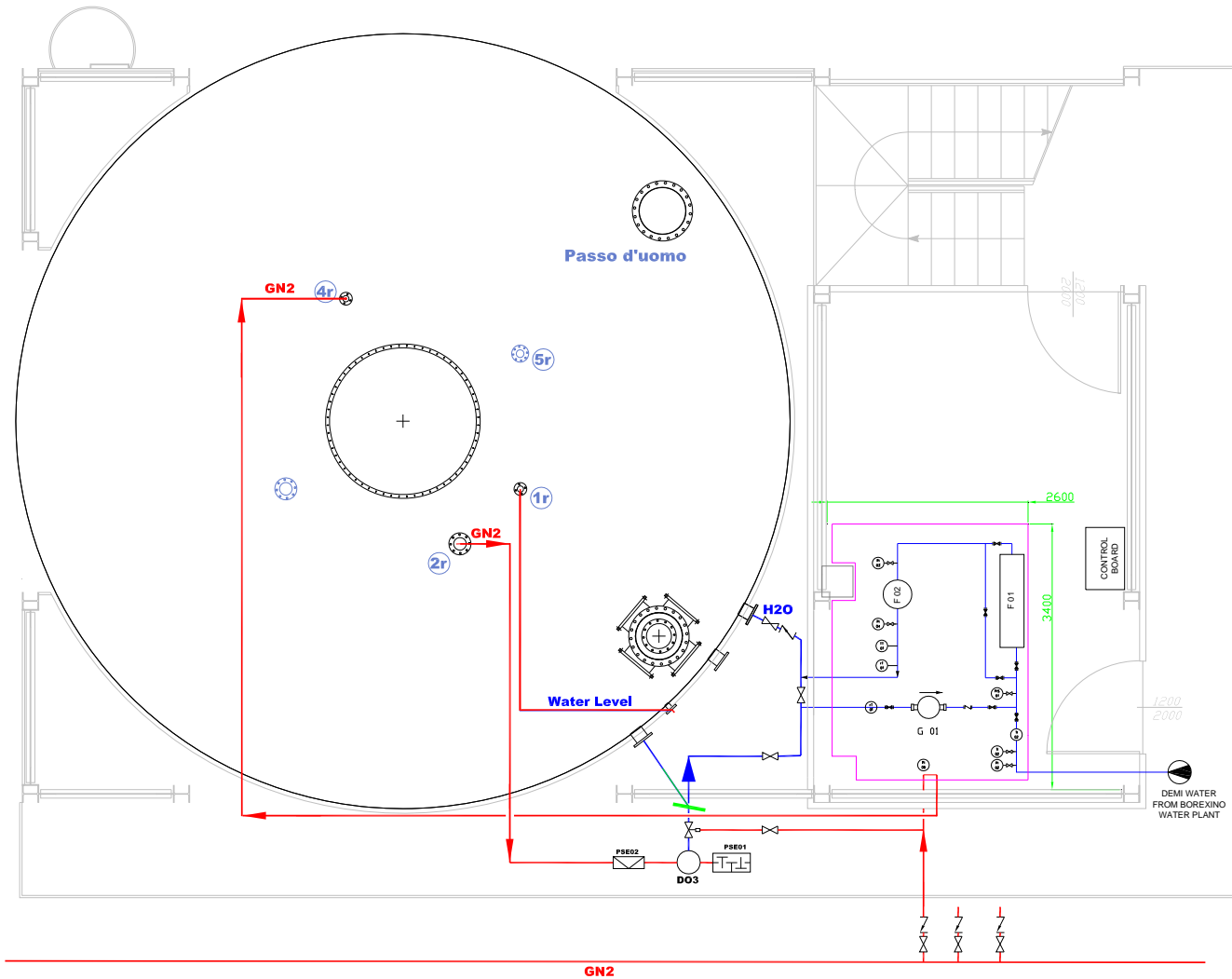


Gerda Meeting
LNGS 9-11 june 08

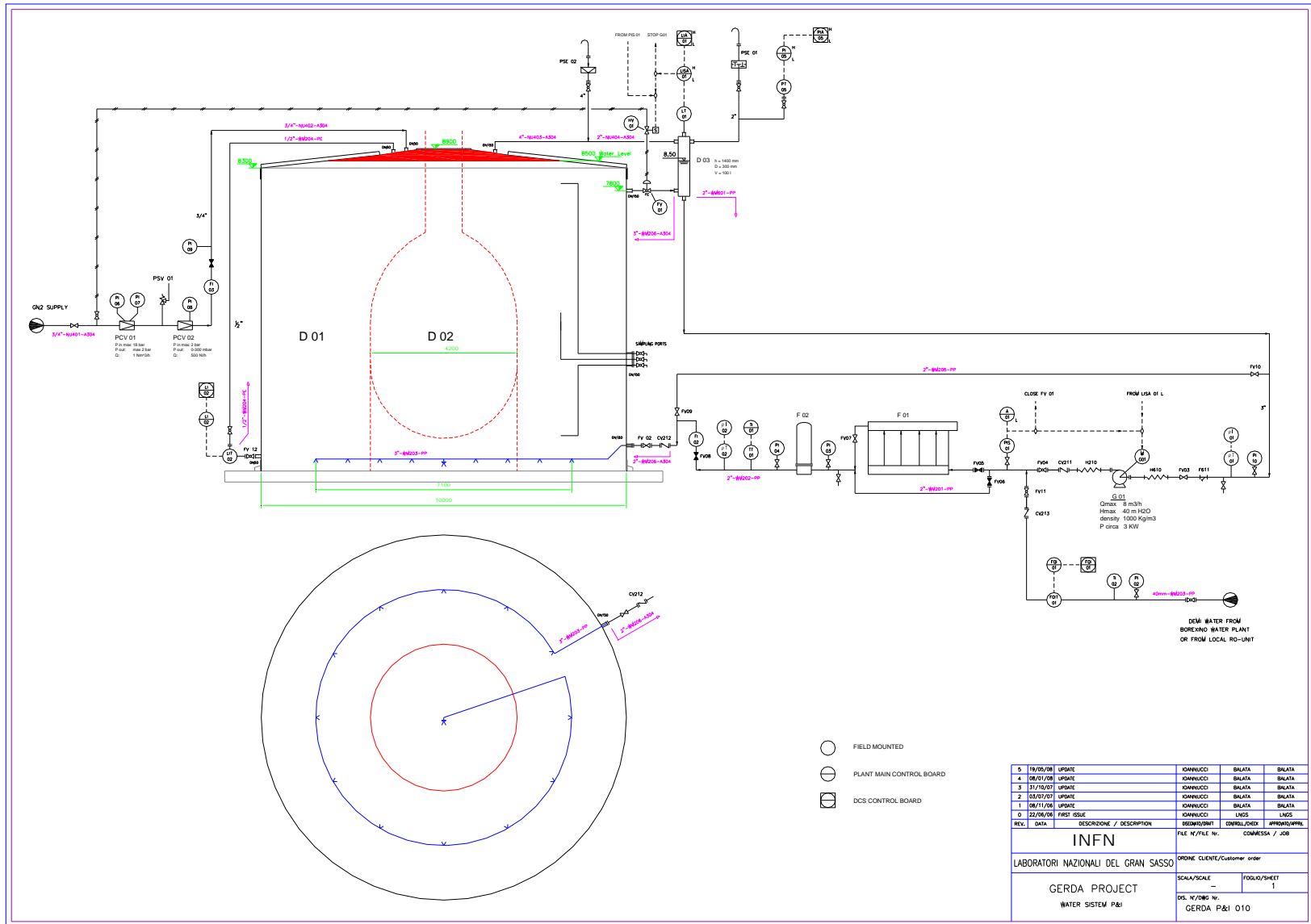
B-B view



Gerda Meeting
LNGS 9-11 june 08



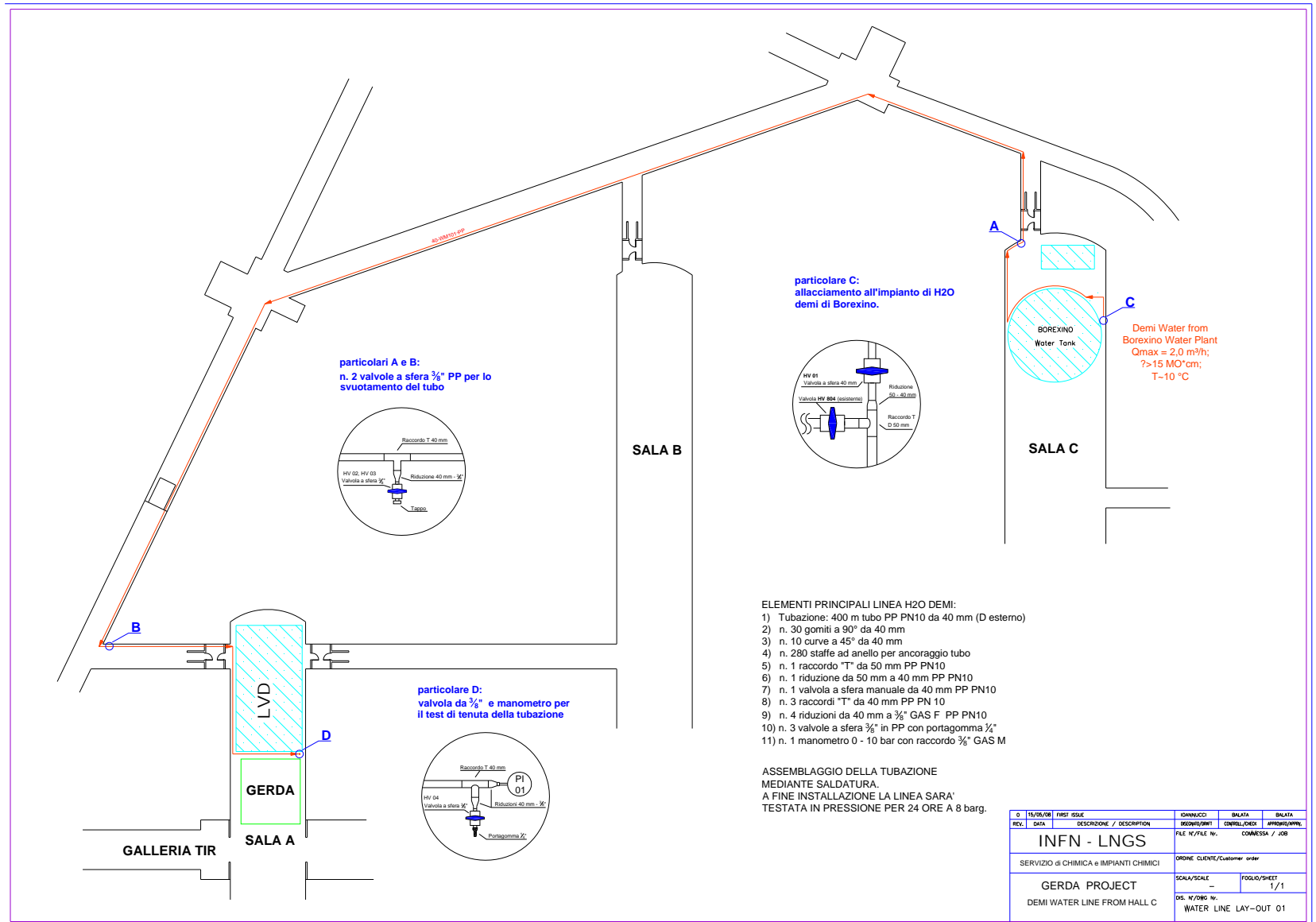
Gerda Meeting
 LNGS 9-11 june 08



Gerda Meeting
LNGS 9-11 june 08

Borexino water plant

- We need to do maintenance:
- CDI is very old (more than 15 years) possible no spare parts available or in case of failure long stop of plant.
- New CDI should be purchased: ca. 13 k€ including installation (to be paid by Borexino and Gerda 50%)
- Inspection of an external expert to evaluate the impact of the work on the Water Plant



Gerda Meeting
LNGS 9-11 june 08